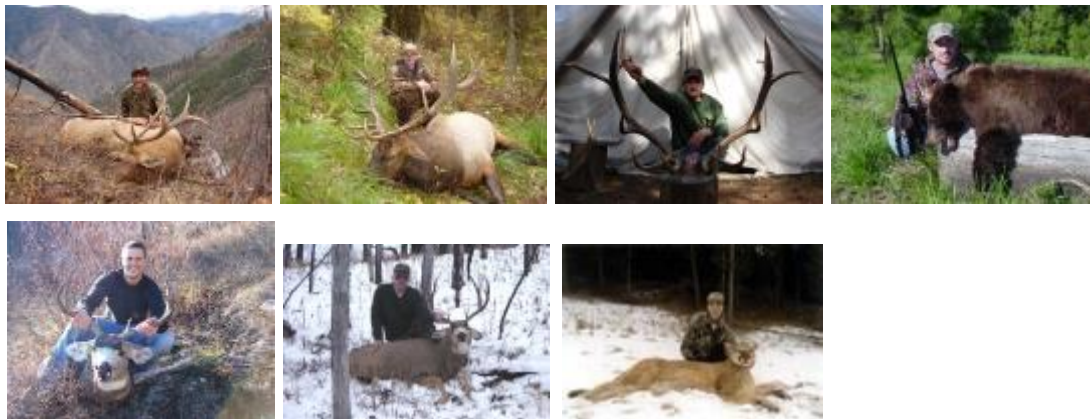


Trophy Mule Deer, Elk, Bear and Mountain Lion we have it all in Idaho. Rifle, Muzzleloader, and archery we hunt all of the season with a high success rate with better than average animals coming in..

Hunt ID: ID-MDeerElkBearLionMoose-All-Pollock-AO-Chad



<b>HUNTS OFFERED</b>	<b># OF DAYS</b>	<b>PRICE</b>
1. <u>BlackBear Bait 3x1</u>	<u>5</u>	<u>\$ 1800</u>
2. <u>Black Bear Hounds 1x1</u>	<u>5</u>	<u>\$ 2100</u>
3. <u>Mountain lion Hounds 1x1</u>	<u>7</u>	<u>\$ 4950 2x1</u>
	<u>6</u>	<u>\$ 3750 2x1</u>
5. <u>Elk and Deer Rifle 2x1</u>	<u>6</u>	<u>\$ 4250</u>
6. <u>Shiras Moose (Draw License) 1x1</u>	<u>8</u>	<u>\$ 5800</u>

**HUNTERS FLY into** Boise and Lewistown where there are all carriers. No charter flights needed.

**HOW TO TRANSPORT MEAT/ TROPHIES:** \_\_\_Ship or take on Plane

**ALL HUNTS Are 2x1 for a 1x1 the cost is an additional \$\_\_1200**

**ANY DROP hunts or SEMI-GUIDEDHUNTS? (explain)\_\_\_Yes need at least 4 to fill a camp no single bookings COST \$\_1950 for Elk.**

**An OBSERVER will COST: \$150 per day. There is no minimum size except for drop camps**

**Additional costs include License(s),Tags,Tax(9% on all hunt prices)**

**Camp facilities for** Elk, Bear, Moose hunts are wall tents, mountain Lion hunts are out of the lodge with hot showers. There are cots in the tents but please bring a sleeping bag. All meals are provided.

We will be hunting off of horseback, walking, or 4x4 trucks whichever provides us the most advantage for the situation. Our guides have 10 plus guiding experience and can always find game. The area is always scouted prior to your arrival so they know where to go prior to you getting here. Skinning and caping is included in your hunt. Meat processing is available and is about \$200 for an elk as a reference.

**OUTFITTER ALWAYS SEND CLIENTS A DETAILED INFORMATION SHEET, Contract, DIRECTIONS, EQUIPMENT AND SO ON after the deposit is received. Our Licensing is simple everything is over the counter.**

**The TYPICAL SIZES OF TROPHIES TAKEN: \_\_Bear-200lbs 70% color phase, Mountain lion 140lbs-200lbs, Elk 290"-320",Mule Deer 150"-180"**

**SUCCESS RATIO BY: ANIMAL SPECIE OPPORTUNITY% KILL RATIO %**

<u>  Bear</u>	<u>  100  </u> %	<u>  100  </u> %
<u>  Mt.lion</u>	<u>  95  </u> %	<u>  95  </u> %
<u>  Elk Archery</u>	<u>  95  </u> %	<u>  30-60  </u> %
<u>  Elk rifle</u>	<u>  95  </u> %	<u>  60-80  </u> %
<u>  moose</u>	<u>  100  </u> %	<u>  100  </u> %

**The level of PHYSICAL EXERTION: goes with the style of hunting. If you have any concerns let the guide know as soon as possible so he can adjust your hunt accordingly. Normally use BLINDS, along with SPOT.STALK, then for bears its bait and hounds, Cats are, Spot and stalk.**

**We PRIMARILY hunt Back Woods Public Land totaling about 600 square miles. This country is tough need to be in decent Shape**

**BEST DATES BY SPECIE:**

Bear May-June

Mountain lion-Dec.-Jan.

Elk archery-last 3 weeks in Sept

Elk and deer rifle last three weeks in Oct.

**S. L. Merriam RCS Discounted Hunts**

**1204 Button Rock Drive Longmont, Co 80501**

**303-776-7528 Voice 303-684-9929 Fax 303-746-1214 Cell Phone**

**EEmail: RCSOutdoorWritersInc@Comcast.Net**

**EEmail:GMerriam@Comcast.Net**

**Web Page: <http://rcsoutdoorwritersinc.com/discountedhuntsdeer.aspx>**