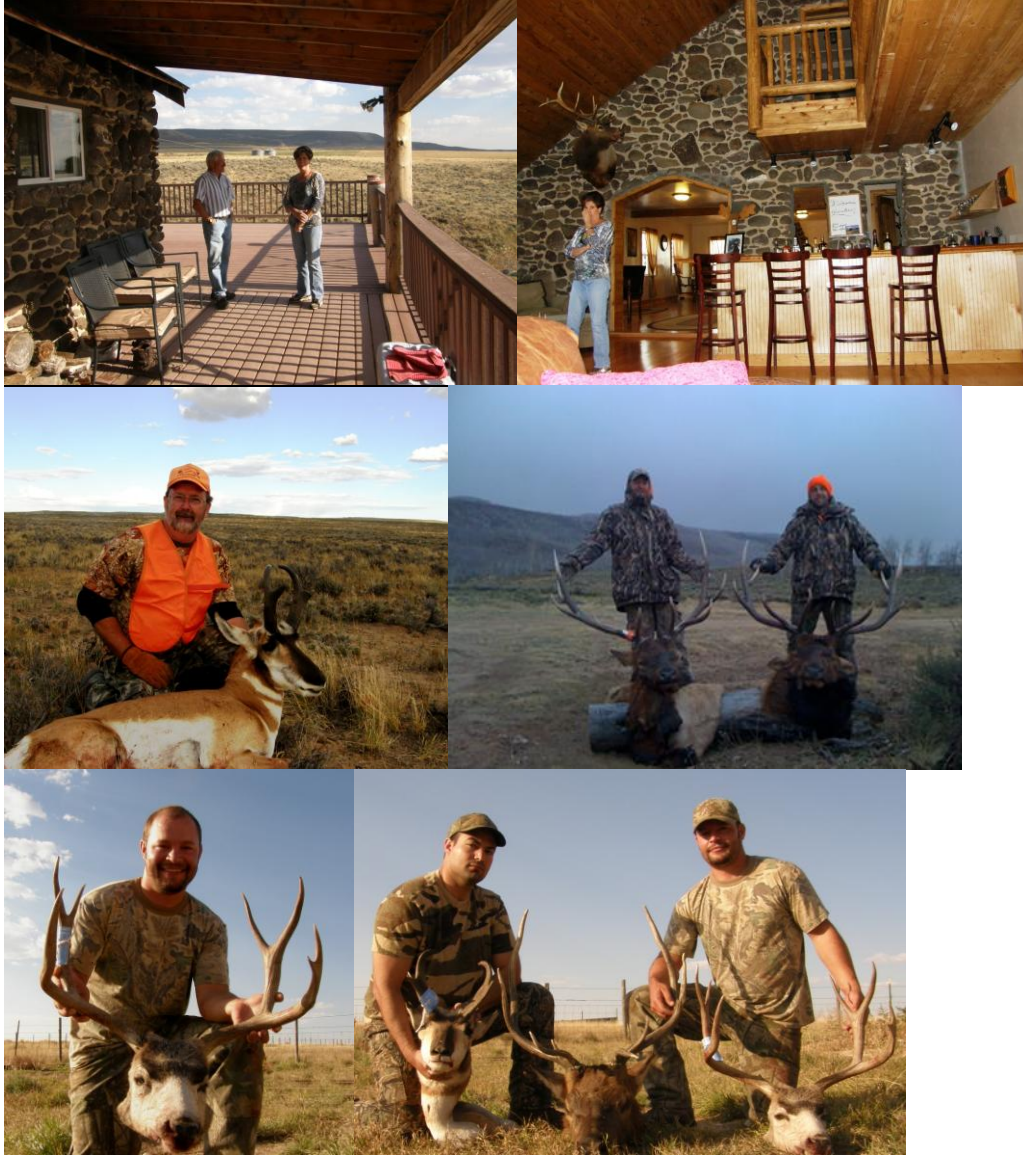


## Four Mile Ranch and Lodge, Craig Colorado

**The Elk Capitol of the Nation, with the Deer and Antelope population not far behind the elk.**



**Hunt ID: CO-ElkMDeerAntelope-All-Craig-4mr-Bob**

**This is the hunting opportunity of a lifetime, hunt deer, elk, and antelope on 21,000 acres of private property with your choice of weapon for the bulk of 3 months on either sex licenses! If you want to hunt a 5 day hunt the first 4 days with a muzzleloader then pull out the rifle for the last day.**

**Enjoy hunting on a ranch in big game rich North West Colorado that is second to none for deer, elk and antelope on your fully guided hunt. Sleep in the deluxe luxury lodge enjoying a 60" big screen, satellite TV, Internet and more to make your evening more enjoyable.**

**The 21,000 acre private ranch is also adjacent to thousands of acres of huntable National forest and BLM land. The area has a sizable local herd and becomes a migratory route as the hunting season nears, for deer and elk down to the valley floor. This provides double the animals normally on this type of habitat. The property is covered with a combination of scrub oak, aspens, pines and cottonwood trees all accessible Moffat County Roads 38 and 40.**

**There are up to 20 various sized stock ponds scattered throughout the property. The ranch ranges in elevation from 6,600 feet, to about 8,000 feet the vegetation varies from creek bottom willow riparian areas and some hay meadow areas, rolling sagebrush hills, rising through oak brush & serviceberry shrub land to aspen and some mixed conifer forest. Most of the ranch is located east of Hwy 13 with. Four mile Creek draining the ranch water from east to west-northwest. While Fortification Creek drains from east to west and turns south on the ranch there are some very dense areas of oak brush & serviceberry exist on the ranch providing excellent wildlife summer and winter thermo cover. Access on the ranch is by 4-wheel drive on existing, marked ranch roads.**

**We are enrolled in the coveted outstanding and very successful, "Ranching for Wildlife" program, allows us to hunt deer, elk and antelope from August 28<sup>th</sup> to December 24<sup>th</sup> each year for all species. This is a great advantage because we can book to your schedule and are guaranteed the licenses to hunt. Only a handful of ranches provide this opportunity for its clients. It also requires us to increase the wildlife habitat to be a member. Many times in the dry high plains that included building rain catch basin ponds which are one of the reasons of our high animal population density.**

**The ranch specializes in quality full service hunts for deer, elk, and antelope. They offer excellent meals cooked by their own chef, transportation to & from Hayden Airport, There are a limited number of hunters, high success ratio on 4 point or better bulls and bucks, and**

**excellent references. The 3000 square foot Majestic lodge is all you could ever dream about after a day of chasing buckskin, elk deer and antelope.**

**Located north of Craig, Colorado, the Ranch is known for exceptional big game hunting opportunities. Northwest Colorado has more animals than people and the countryside proves it with wide open spaces, panoramic views, and the feeling of the real old west. The property is located in Moffat County approximately 20 miles north of Craig, Colorado, a small city with all the amenities. It is one hour from Steamboat Springs Ski Area and 45 minutes from Hayden Airport which has jet flights by major carriers.**

**Roughly 1/3 of all elk taken in Colorado occurs in the northwest area of the state and this property is in the heart of it. The town of Craig is known as the Elk Capitol of the nation and rightly so the area is within the numerous migration routes of the elk herds allowing for great hunting opportunities. The CRP program was a hit when marginal wheat ground was turned into government funded CRP pasture of high broom grass, alfalfa and a native mix of seeds. As time goes many elk just stay down in the Craig valley all year now, but there are still plenty to migrate down with the snow each fall. Deer habitat abounds with the mixture of alfalfa, grass hay ranchland with water available.**

**The fastest land mammal in North America takes ownership of the wide open flat areas to raise their young each year and provide challenging opportunity to antelope hunters annually. The property is in Colorado's Game Management Unit 3 and 4. Other huntable species in the area include, bear, lion and a number of different species of grouse.**

**The property is also very close to Freeman Reservoir a small fishing reservoir in the nearby national forest.**

**Average Hunting Success Rates:**

**ELK      DEER      PRONGHORN**

Male:	-	-	100%
Either Sex:	82%	83%	-
Female:	74%	95%	100%

There are no antler-point restrictions on the ranch. The seasons are open from August 28<sup>th</sup> until December 24 on either sex animals or hunting with any weapon bow, muzzleloader or rifle. The openings not yet booked are in Sunday-Saturday November 21 to 28<sup>th</sup> and December 02 to 12, 2010. Booking locks in your hunt date as soon as the deposit is received. Exceptions may be available but not until after the deposit is received and the hunt booked. This is due to the ranch size and a separate 5000 acre parcel of the ranch being available.

The deer and elk hunts are 5 day fully guided with meals and deluxe lodging in the 4 Mile Ranch Lodge. The antelope Hunts are semi-guided you will receive a map, and a tour of the antelope areas of the ranch on the map.

These prices are money to the ranch amount not sell price

Guided Hunt with Deluxe Lodging and Meals at the lodge discounted down to the price below only as long as the hunts are available, when they are gone they are gone!

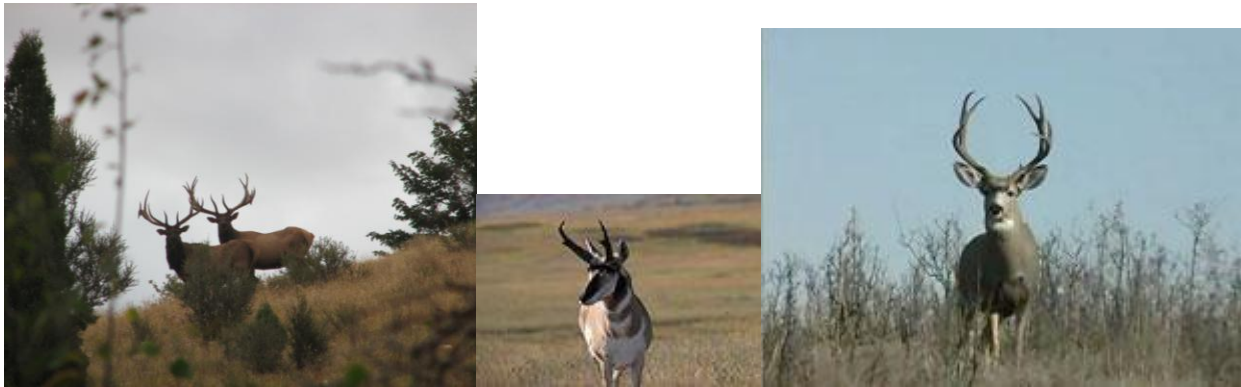
Either Sex **Elk**.....\$ 4550 reduced to only \$ 2995  
 Either sex **Deer**.....\$ 4550 reduced to only \$ 2995  
 Either Sex **Antelope**.....\$ 1900 reduced to only \$ 1200

(Note: The Deer and Elk hunts are 5 day guided, with lodging and meals. The antelope is a 3 day DIY or Semi-Guided hunt on the 21,000 private ranch. You will be given a map of the ranch, with the fences and the recommended places marked to find antelope. Additionally Antelope season ends November 12<sup>th</sup> while deer and elk seasons end 12/24/2010 as noted above)

Game animal vouchers are included in this price above; this is not a draw area.

These animals have been managed for quality and quantity. This is by far the lowest pricing these hunts have been able to be sold for in history, guaranteed!

Elk and Deer hunts are 6 day hunts and antelope hunts are 3 day hunts.



<http://rcsoutdoorwritersinc.com/DiscountedHunts.aspx>

Greg Merriam  
Hunt Broker  
1204 Button Rock Drive  
Longmont, Co 80504  
303-776-7528 Voice  
303-684-9929 Fax  
303-746-1214 Cell Phone  
EMail:GMerriam@Comcast.Net